



Elizabeth Tower, Silvercroft Street, Manchester

£2,040 PCM

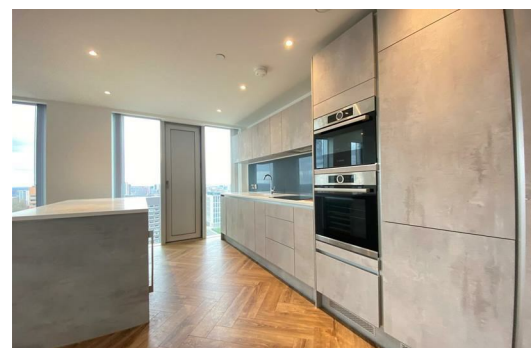
This luxury city facing, two-bedroom apartment is located at the gateway of Manchester city centre in one of the city's most in-demand addresses. With just a short walk to Deansgate and Spinningfields, there's everything you could ever need right on your doorstep. The apartment is a LUX meaning more sq ft than your standard two-bedroom apartment

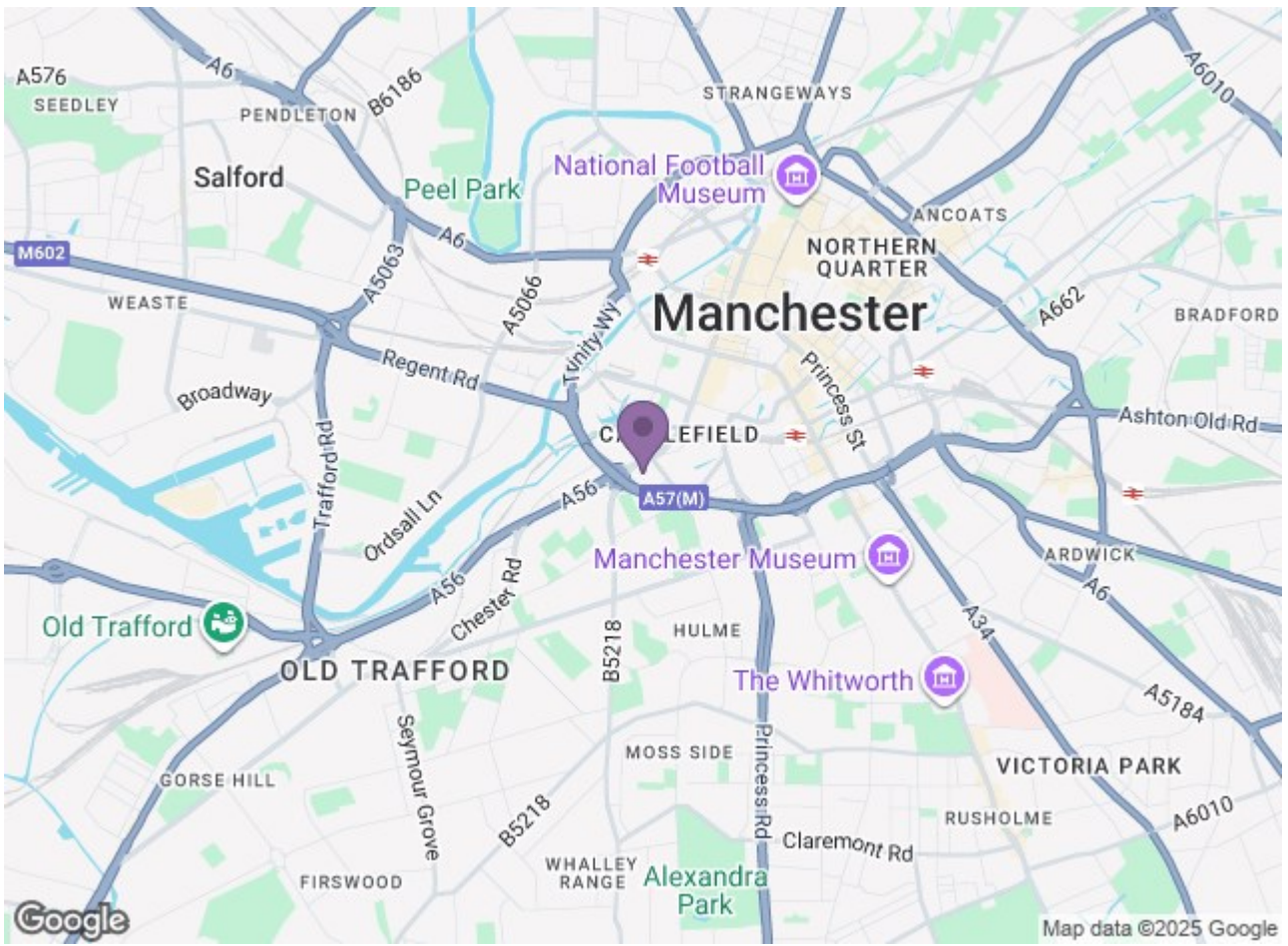
The high-end apartment is in a 44-storey skyline, offering inspiring views across the city. Each room is finished to the highest standard, with a stylish open plan kitchen/living area that's great for entertaining, two dazzling double bedrooms, an ensuite and a master bathroom.

You'll also have access to the breath-taking 44th floor swimming pool (one of the highest in Western Europe!), Royal Garden and gymnasium as well as a communal hub, residents lounge and co-working space.

With its elegant interiors, amazing facilities and fantastic location, this apartment is guaranteed not to be on the market for long. If you are interested in having a closer look or have any questions, don't hesitate to get in touch

Available 18th September 2025.
Council Tax Band D.
12 Month tenancy.
Deposit: £2,350





Energy Efficiency Rating		Environmental Impact (CO ₂) Rating	
Current	Potential	Current	Potential
A	A	A	A
B	B	B	B
C	C	C	C
D	D	D	D
E	E	E	E
F	F	F	F
G	G	G	G
88	92	88	92
England & Wales	England & Wales	England & Wales	England & Wales